



Florida State University School/Florida High

3000 School House Road
 Tallahassee, Florida 32311
 Phone: 850-245-3700
 Fax: 850-245-3721

www.fsus.fsu.edu

CEEB # 101-676

Jesse Jackson – Director

Susan K. Martelli – High School Principal

Roshad Thomas – Guidance Counselor

Community

Tallahassee is located in Leon County, Florida, a rapidly growing community of 245,000 permanent residents and 65,000 college students. The economy is based primarily on state government, two major universities, a large community college, and a regional medical complex. As the state’s capital, Tallahassee is the cultural and professional center of North Florida.

School

Established in 1851, Florida High began as the preparatory department for aspiring teachers attending Florida State University. In 1930, Florida High graduated its first senior class consisting of 11 students. Some 75 years later, 136 students received their diplomas as members of the 2005 Florida High graduating class. Throughout the years, the school has been established as a K-12 public school district under Florida Statute (229.591 f.s), a developmental research school (228.053 f.s), and a university charter school (228.056 f.s). Florida High is a regional school of choice located within the Education Village at SouthWood in southeast Tallahassee on a 50-acre site with 10 buildings, a state-of-the art athletic complex, and an art gallery. Florida State University School is very proud to have received an “A” rating from the Department of Education for the past 5 years.

Faculty

There are 106 K-12 Florida State University School faculty members. The high school faculty consists of 41 teachers, 1 guidance counselor, 1 Media specialist, and 1 reading coach. Six of the eleven National Board Certified faculty members are currently at the high school level.

Curriculum

Advanced Placement (AP) Courses are offered in European History, American History, World History, Government and Economics, English Literature, English Language, Calculus, Statistics, Latin, Biology, Art (Drawing), Art (2D Design). The AP teachers are trained by College Board consultants, and all students enrolled in AP courses are required to take the AP exam. The number of students taking AP classes has doubled in the last 2 years.

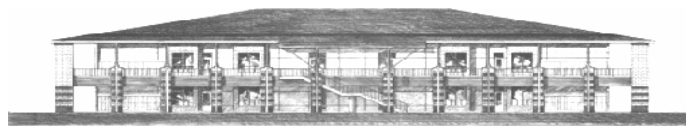
Honors Courses are offered in all major disciplines. The transcript designates honor courses with an “H” after the letter grade.

Dual Enrollment Courses are accessible to our students on the campus of Florida State University, Florida A&M University, or Tallahassee Community College. Tallahassee Community College offers some dual enrollment courses on the Florida High campus during school hours as well as after hours.

Vocational Education Courses are available in the areas of Culinary Arts, Early Childhood, and Web Design.

Grading Scale			Requirements for Graduation	
Scale	Grade	General		
90-100	A	4.0	English	4 credits
80-89	B	3.0	Math	3 credits (including Algebra I or its equivalent)
70-79	C	2.0	Science	3 credits
60-69	D	1.0	Social Studies	3 credits (World, American, Economics/American Gov.)
0-59	F	0.0	PE	1 credit (.5 credit Personal Fitness or equivalent)
			Life Management	.5 credit
			Arts (Practical or Fine Arts)	1 credit
			Electives	8.5
			Total credits	24 credits
			Community Service	75 hours

EXCELLENCE IS OUR STANDARD



Florida High Information

2005-2006 Enrollment	Total School (K-12) – 1600 High School (9-12) – 611 Class of 2006 - 126
Accreditation	Southern Association of Colleges and Schools
School Year	Nine-week grading periods Two grading periods per semester
Classes	7 periods each day 50 minute classes 180 days a year
Credit	½ credit is given per semester per class with a grade of D or better
Grade Point Average (GPA)	The unweighted GPA is calculated on a 4.0 scale
Class Rank	Based on unweighted GPA; calculated on all credits attempted and/or earned; based on entire class population
Test Scores	SAT – Florida High Average Score – 499 Verbal and 515 Math State Average – 499 Verbal and 499 Math
Clubs and Organizations	National Honor Society, Mu Alpha Theta, Key Club, Student Government, Science Club, Latin Club, Spanish Club, Drama Club, SADD, FBLA, Brain Bowl

Academics

- 95 Bright Future Scholarship Qualifiers – 9 Academic, 56 Medallion, 3 Gold Seal Vocational Scholars
- Brain Bowl Team – 4th in the regional competition; one student placed 3rd in the overall competition
- Spanish Conference 2005 – 13 trophies at the “sobresaliente” (outstanding) level
- Junior Classical League (Latin) – 1st place 2005 Regional Competition; for the past 15 years students have placed in top 5 every year but 2 at the state level; one student placed 1st in academics in the nation at the 2005 National Junior Classical League competition

Athletics

FHSAA State Ranking – Class 3A Public - #4



- State Championship 2003-2004 and 2004-2005 – Girl’s Track
- State Qualifiers 2004-2005 – Girl’s Tennis, Cheerleading, Boys Track, Weightlifting
- Regional Qualifiers 2004-2005 – Boy’s golf, Girl’s/Boys Swimming, Girl’s Cross Country, Volleyball, Baseball
- District Championship 2004-2005 – Baseball, Volleyball, Girl’s basketball
- Football – state playoffs – 3 consecutive years.
- Regional Coach of the Year 2004-2005 Tennis and Track

Special Programs

- First Lady's "Arts Achieve" School for 2005 sponsored by FAAE (Florida Alliance for Arts Education)
- Art Department - Best of Show in the Art Show at the North Florida Fair and Winter Festival 2005
- Orchestra – Superior ratings at the state level for the past 2 years; orchestra students have consistently placed in All-State Orchestra for the past 6 years
- Band – Superior ratings in District and State level competition for 5+ years
- Chorus – Best of Show for the Mixed Chorus in National Competition – Festival of Music 2005

EXCELLENCE IS OUR STANDARD